

Brainicity™

Brain Biofield Enhancement

John A. Allocca, D.Sc., Ph.D.

Medical Research Scientist & Biophysicist

202 East Main Street, Suite 102

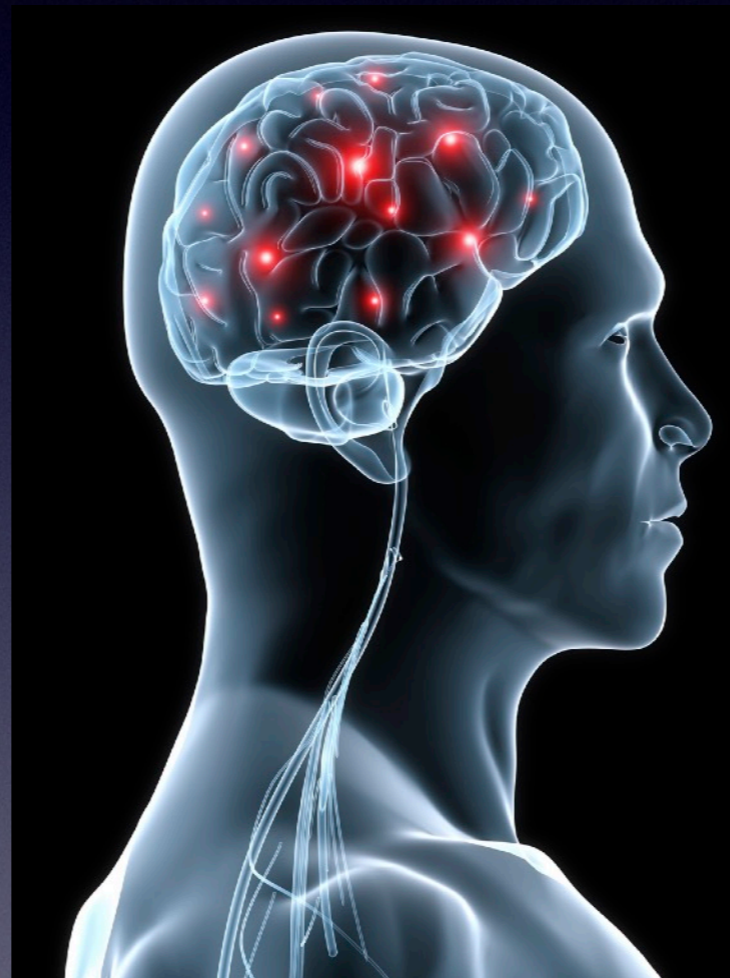
Huntington, NY 11743

(631) 757-3919

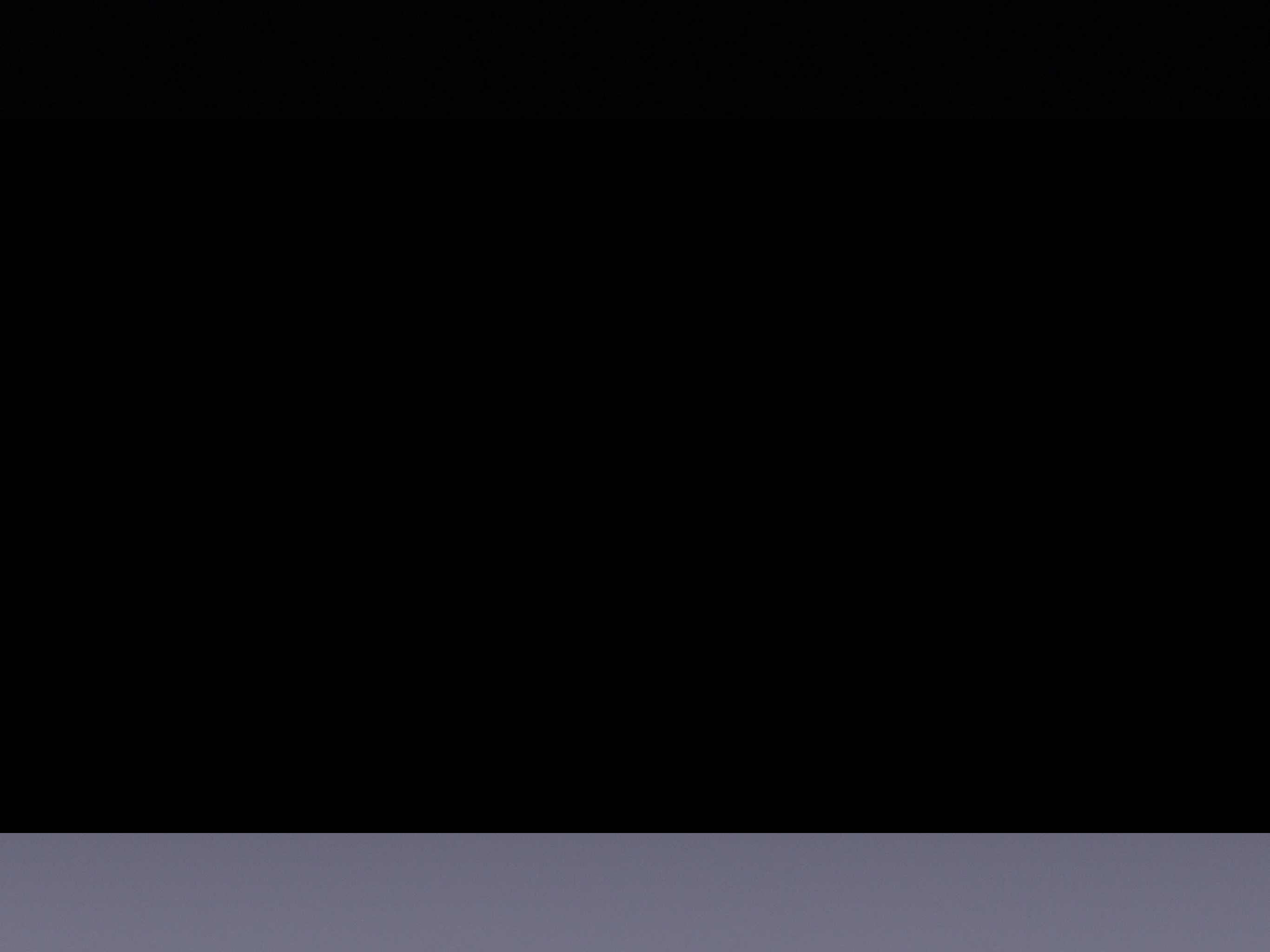
www.allocca.com

Brainicity™

Brain Biofield Enhancement



Make Your Brain Happy



Brainicity™ Brain Biofield Enhancement

- Reduce Stress and Anxiety
- Reduce Attention Deficit
- Reduce Headaches
- Reduce Phobias
- Reduce P.T.S.D.
- Help with Epilepsy
- Increase Cognitive Function
- Get Better Sleep
- Increase Performance



Someone who really needs Brainicity™

Before Brainicity™



During Brainicity™

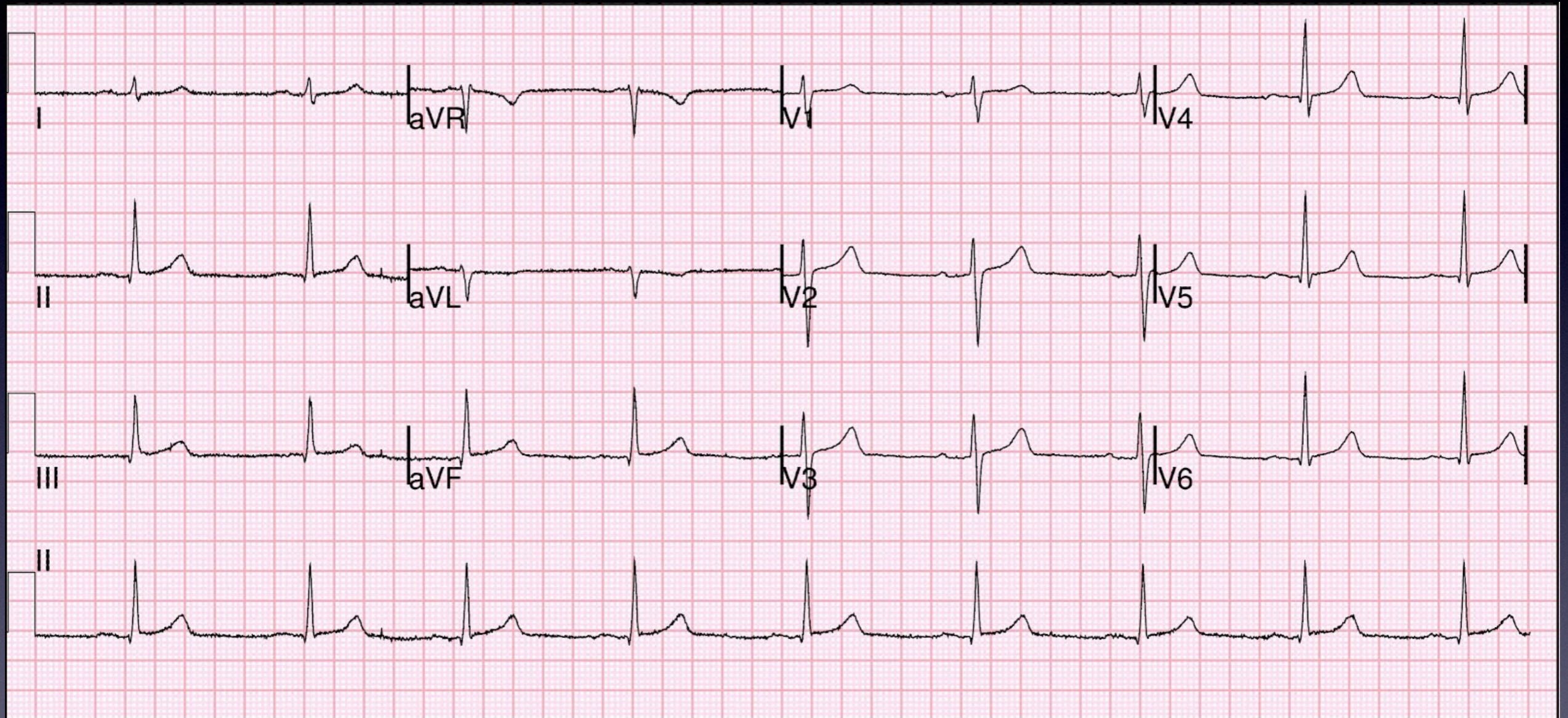


After Brainicity™

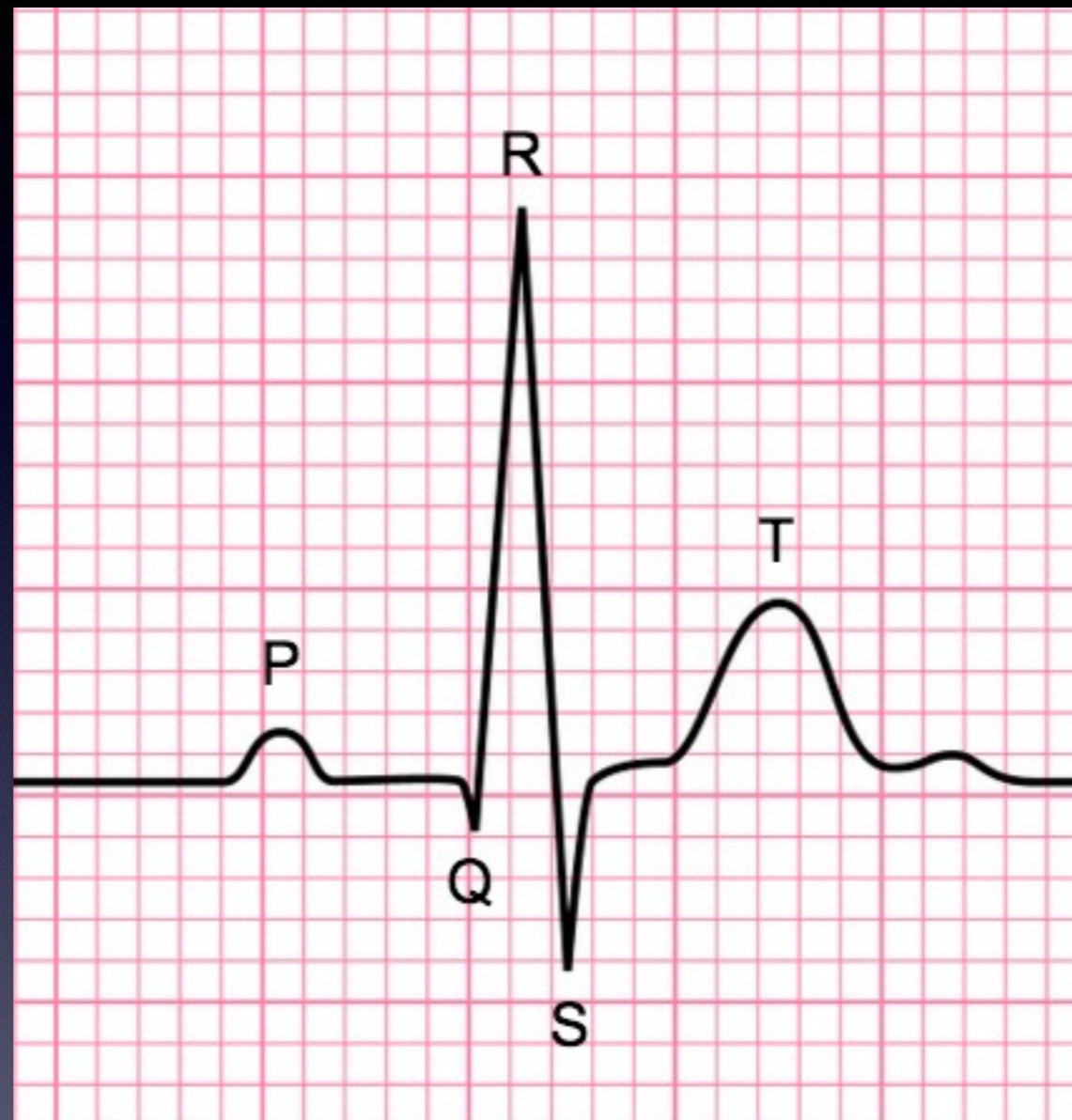
What is a Biofield?

The heart produces electromagnetic signals, which is called electrocardiography (ECG) or the heart biofield.

The brain produces electromagnetic signals, which is called electroencephalography (EEG) or the brain biofield.



Electrocardiogram (ECG) - Heart Biofield



ECG Deciphered



Electroencephalogram (EEG) - Brain Biofield

Beta
[12-30 Hz]



Alpha
[8-12 Hz]



Theta
[4-8 Hz]



Delta
[1-4 Hz]



Time
→
1 sec

EEG Deciphered

The brain produces an erratic biofield that can be deciphered. Brain waves are classified by frequency as Delta, Theta, Alpha, and Beta waves.

- Delta (0.5 Hz to 4 Hz) is seen normally in slow wave sleep.
- Theta (4 Hz to 8 Hz) is seen in drowsiness, meditation, and creative states.
- Alpha (5 Hz to 12 Hz) emerges with closing of the eyes and with relaxation, and attenuates with eye opening or mental exertion.

- Beta (12 Hz to 30 Hz) is associated with active, busy or anxious thinking and active concentration.
- Gamma (30 Hz to 42 Hz) modulates perception and consciousness. A greater presence of gamma may be related to expanded consciousness.

What is Brainicity™?

Brainicity™, developed by Dr. John A. Allocca, uses integrated harmonic wave audio patterns to facilitate multiple brain biofield resonances.

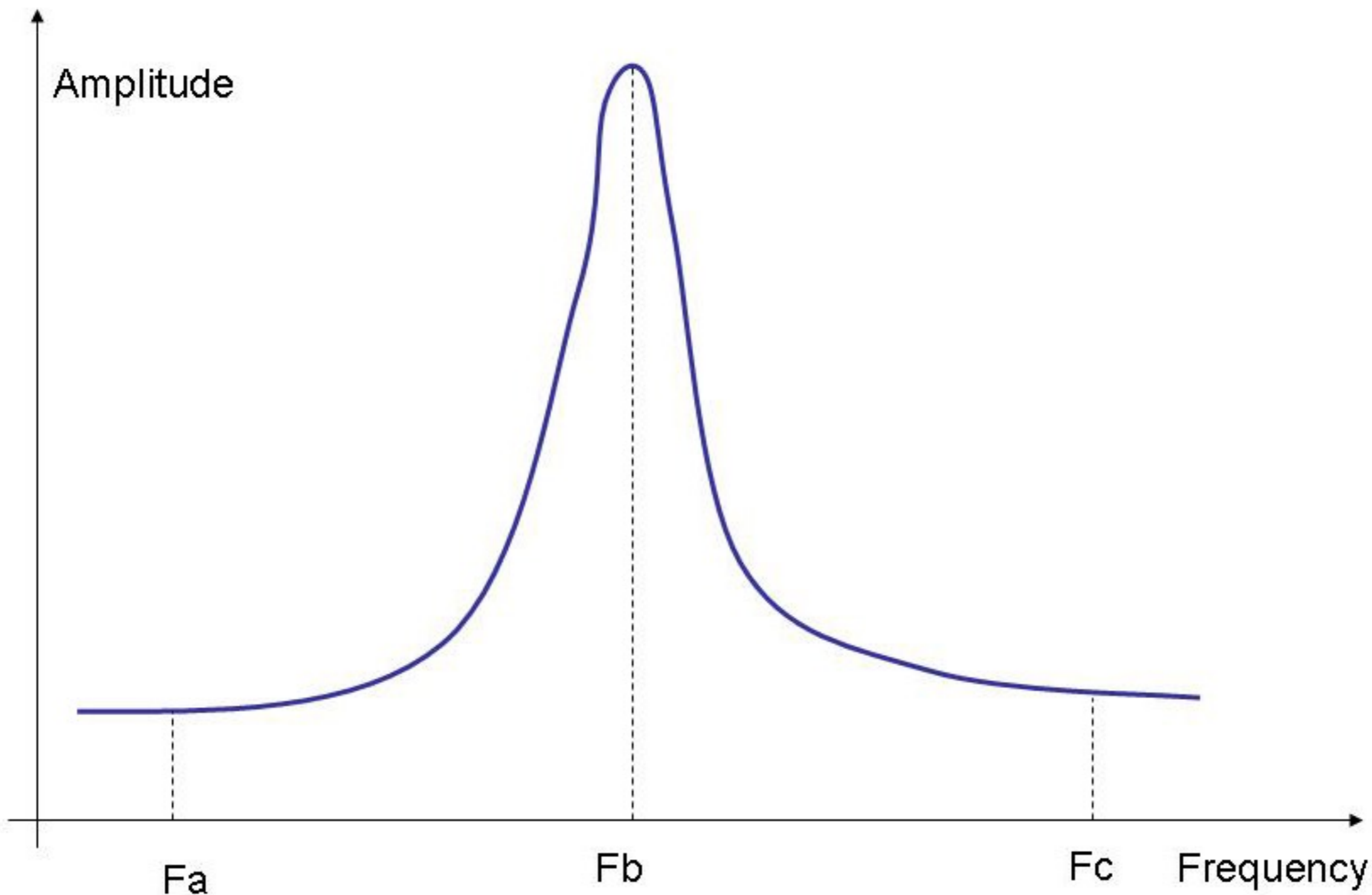
Too many harmonics can cause the brain to be overwhelmed because it has a limit of how much information can be processed at a given time resulting in the brain ignoring the inputs.

Too little harmonics will not be effective.

An integrated wave will produce a limited number of harmonics, which can be interpreted by the brain.

Resonance occurs when the frequency of a periodic waveform is in phase with an external periodic waveform of equal or almost equal frequency to the internal frequency.

This causes the system to oscillate with a larger amplitude than the force applied at other frequencies.



Resonance

Waveforms in the frequency range of 0.5 to 20 hertz are below the human hearing range.

In order for the brain to be able to sense brain wave frequencies it cannot hear, binaural application of different frequencies are applied to each side of the brain.

The difference between two frequencies produces a third frequency as interpreted by the brain, which is within the human hearing range of the brain wave frequencies (brain biofield).

Then, the resulting complex pattern of waveforms are set to achieve multiple resonances with the brain's own waves.

In summary, Brainicity™ generates a unique waveform with a specific number of harmonics.

The frequencies of this waveform vary as set by the machine.

This special waveform at two different frequencies are fed into the brain via headphones to produce an interpreted single frequency that is within the brains biofield of delta, theta, and alpha range.

Hemispherical Processing Theory

There is often limited communication between the left and right hemispheres and the limbic system of the brain, which is the emotional center of the brain.

If the hemispheres of the brain are utilized separately, they may process experiences, especially stressful ones, differently.

An internal conflict may be created by different interpretations of the left and right brain hemispheres, potentially resulting in increased anxiety in response to a stressful situation.

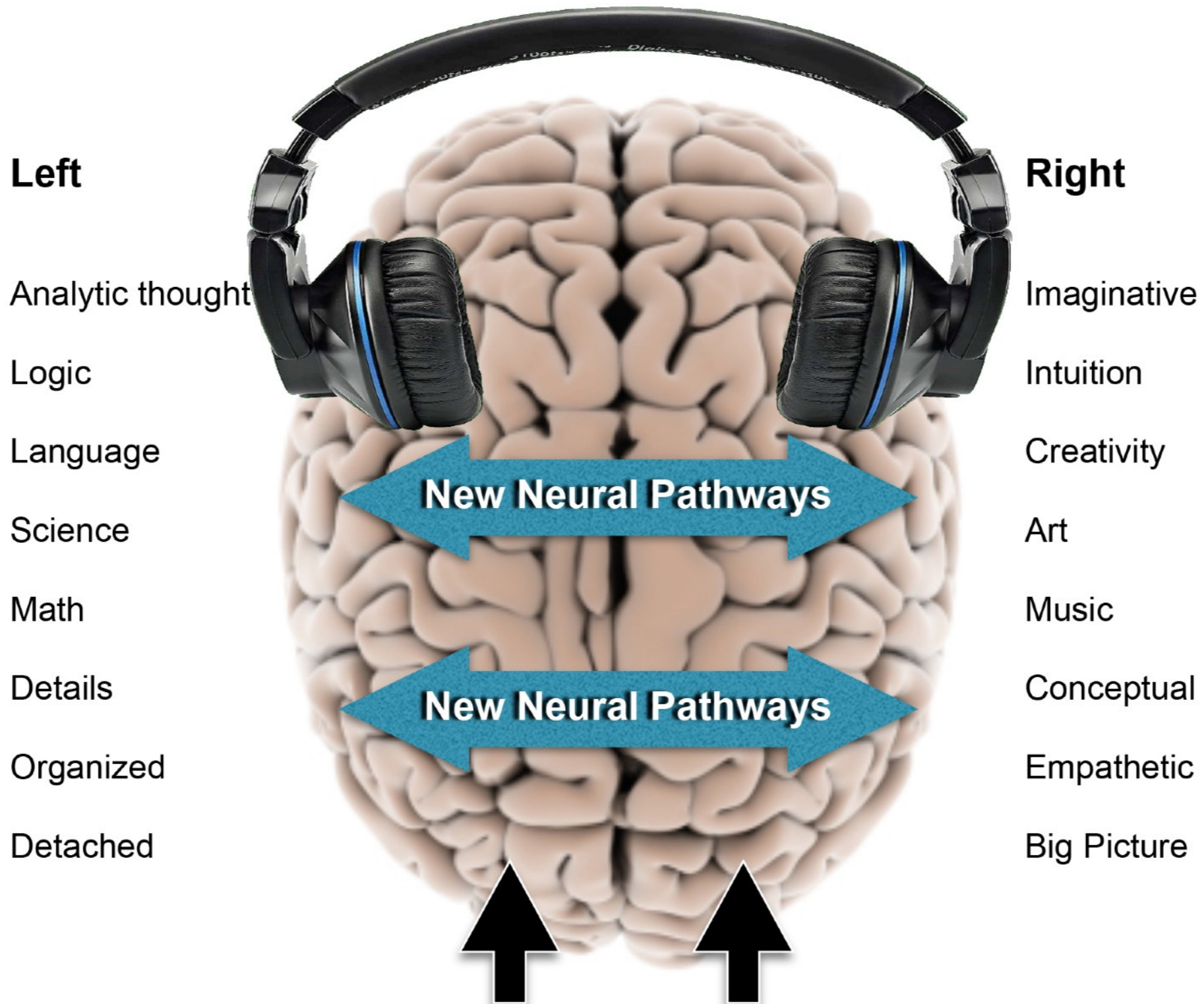
Without proper communication between the two hemispheres, the conflict may never be resolved and the issue or trauma may become deeply suppressed.

The Brainicity™ Brain Biofield Enhancement System uses a unique waveform with binaural stimulation whereby different sounds are fed into the left and right ear.

The brain produces a third sound.

It is this process that promotes the development of new neural pathways between the right and left hemisphere of the brain.

Brainicity™ Brain Biofield Therapy



Emotion Arises from Stressful Situation

EEG Study Data Sample

EEGs of subjects were measured while they are alert, during rest, and during NeuroPath (Brainicity™) sessions.

The waveforms shown on the next slide are from a typical subject in the study.

Notice the increase in alpha wave activity during the NeuroPath session.

Brainicity™ was formerly called NeuroPath.

EEG Waveform - Alert

Ch1 (Left) Raw



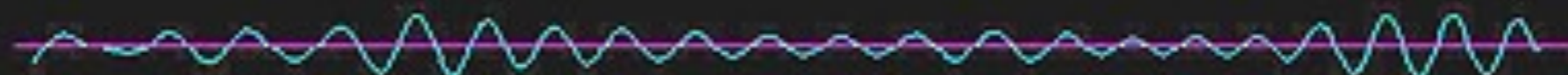
Delta



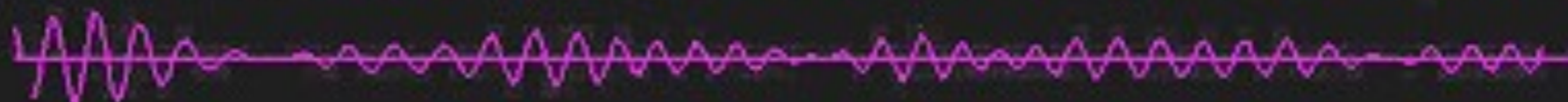
Theta



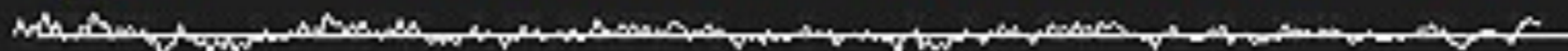
Alpha



Beta



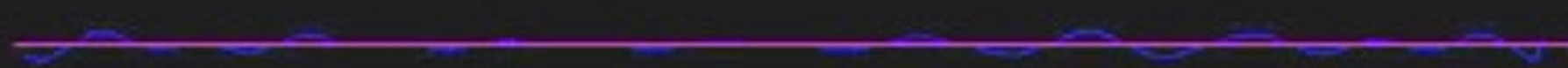
Ch2 (Right) Raw



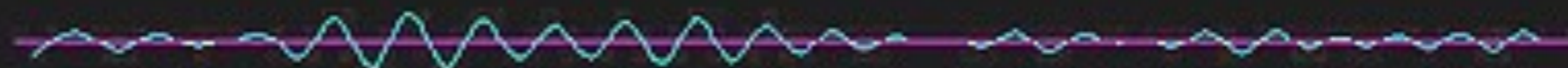
Delta



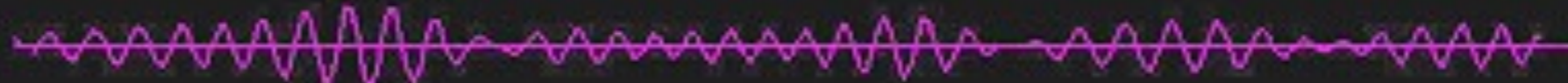
Theta



Alpha



Beta

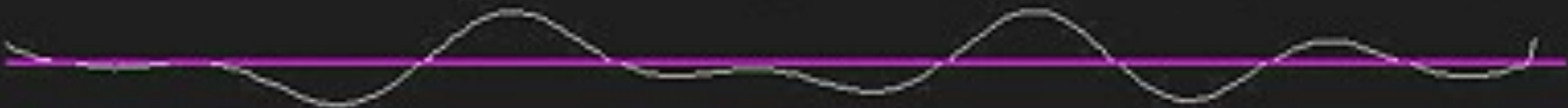


EEG Waveform - Resting

Ch1 (Left) Raw



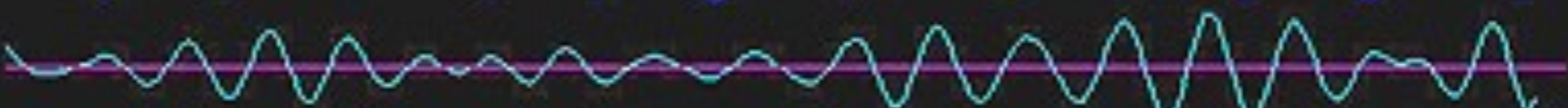
Delta



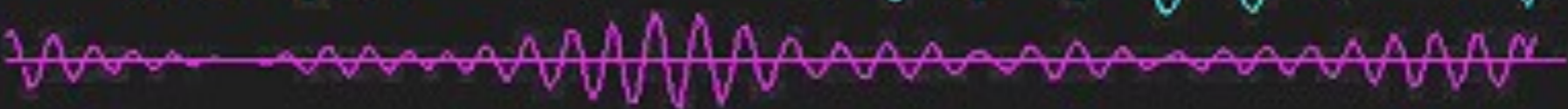
Theta



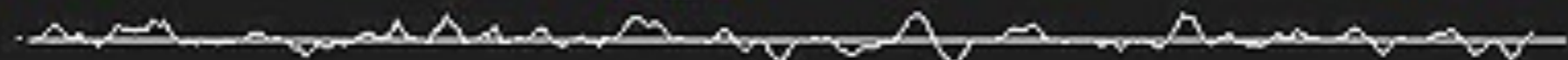
Alpha



Beta



Ch2 (Right) Raw



Delta



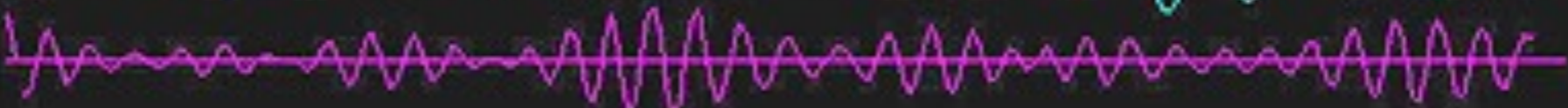
Theta



Alpha



Beta

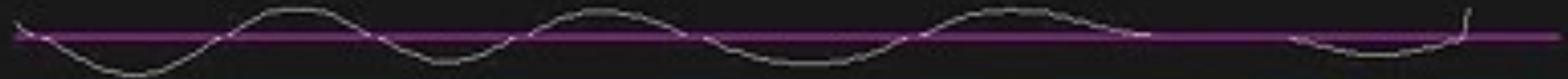


EEG Waveform - NeuroPath

Ch1 (Left) Raw



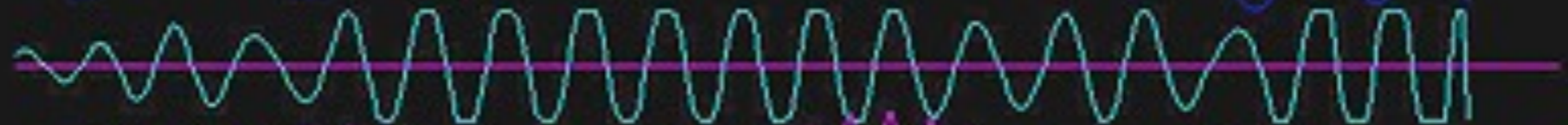
Delta



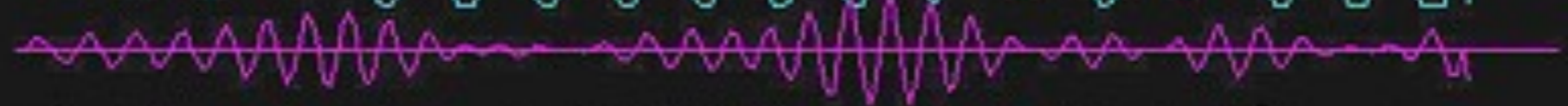
Theta



Alpha



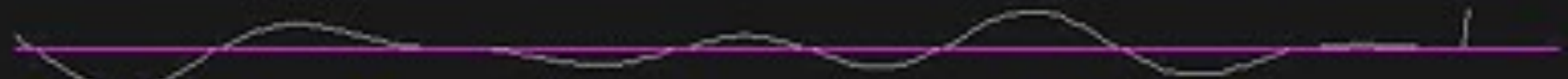
Beta



Ch2 (Right) Raw



Delta



Theta



Alpha



Beta



Brainicity™ Biofield Enhancement System



The Brainicity™ machine can be tuned to different frequencies.

Dr. Allocca made many hours of recordings from the Brainicity™ system and assembled them via computer software to produce a variety of downloadable MP3s.

Brainicity™ MP3 Ascension Package :

C2 Scale, E.L.F. 1 (21 minutes) Delta

C3 Scale, E.L.F. 1 (21 minutes) Delta

C4 Scale, E.L.F. 1 (21 minutes) Delta

C2 Scale, E.L.F. 2 (21 minutes) Delta, Theta, Alpha

C3 Scale, E.L.F. 2 (21 minutes) Delta, Theta, Alpha

C4 Scale, E.L.F. 2 (21 minutes) Delta, Theta, Alpha

The above selections includes a musical background to make the experience more pleasurable.

Brainicity™ For Cognitive Development (7 minutes)

Brainicity™ For Higher Spiritual Energy (7 minutes)

Brainicity™ For Pain and Stress Reduction (7 minutes)

Brainicity™ For Pyramid Energy (7 minutes)

Brainicity™ For Transforming Negative to Positive Energy (7 minutes)

Brainicity™ For Expanding Consciousness - Gamma (7 minutes)

Custom Brainicity™:

A custom Brainicity™ system is available online. Select the tones that you relate to or that pleases you the most. Dr. Allocca will assemble them into a downloadable MP3 file.

For More Information...

John A. Allocca, D.Sc., Ph.D.

Medical Research Scientist & Biophysicist

Allocca Biotechnology, LLC

(631) 757-3919

www.allocca.com